



Remodeling Healthcare for Children with NJ FamilyCare: *Nothing About the Families Without the Families!*

NJ InCK 2021 Webinar Series

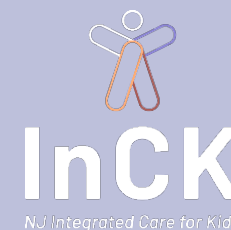
Thursday, August 12th, 2021

New Jersey Chapter

INCORPORATED IN NEW JERSEY

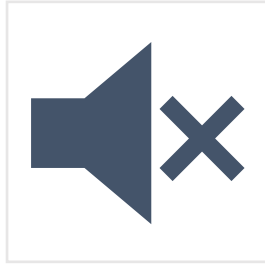
American Academy of Pediatrics

DEDICATED TO THE HEALTH OF ALL CHILDREN®



This NJ InCK project is supported by the Centers for Medicare and Medicaid Services (CMS) of the U.S. Department of Health and Human Services (HHS) as part of an award totaling \$2,999,979 in 2020 and \$ 2,999,148 in 2021 with 0% percentage financed with non-governmental sources. The contents are those of the author(s) and do not necessarily represent the official views of, nor an endorsement, by CMS, HHS or the U.S. Government.

Participant Reminders



All participants will be muted throughout the duration of the session to minimize any disruptions.



Utilize the Q&A feature to ask our presenters questions.



Please remain respectful and professional within the Q&A box.

Continuing Medical Education Disclosure

Accreditation Statement for 8/12/21 Webinar:

This activity has been planned and implemented in accordance with the accreditation requirements and policies of the Medical Society of New Jersey through the joint providership of Atlantic Health System and the American Academy of Pediatrics, New Jersey Chapter. Atlantic Health System is accredited by the Medical Society of New Jersey to provide continuing medical education for physicians.

AMA Credit Designation Statement:

Atlantic Health System designates this live activity for a maximum of 1.0 AMA PRA Category 1 Credits™ on August 12th, 2021, for the webinar. Physicians should claim only the credit commensurate with the extent of their participation in the activity.

Successful completion of this CME activity, which includes participation in the activity, with individual assessments of the participant and feedback to the participant, enables the participant to earn 1.0 MOC points in the American Board of Pediatrics' (ABP) Maintenance of Certification (MOC) program. It is the CME activity provider's responsibility to submit participant completion information to ACCME for the purpose of granting ABP MOC credit. Disclosure Statement: The presenters have nothing to disclose.

Nursing Contact Hours:

The New Jersey Board of Nursing (NJAC 13:37-5.3) states: *"A registered professional nurse or licensed practical nurse may obtain continuing education hours from the following: (d)3. Successful completion of continuing medical education courses recognized by the American Medical Association, the American Osteopathic Association or the American Podiatric Medical Association: one hour for each 60 minutes of attendance."* Nurses should claim only the credit commensurate with the extent of their participation in the live activity.

Learning Objectives

1. Learn about how the Integrated Care for Kids approach meets the health, behavioral and social needs of children with NJ FamilyCare
2. Detail how the Integrated Care for Kids approach to ensuring quality care for children with NJ FamilyCare is achieved through family-centered care integration
3. Understand what the SPAN Parent Advocacy Network provides for children and families to promote *Whole Child Care*
4. Recognize the available family-centered New Jersey resources and how to engage children and families with the appropriate organizations and tools

Disclosures

Our presenters have NO financial disclosures or conflicts of interest with the material presented in this webinar.

The presentation reflects the viewpoints of the presenter only and does not necessarily represent the viewpoint of the state of New Jersey or other partners.

Integrated Care for Kids Approach to Care Management

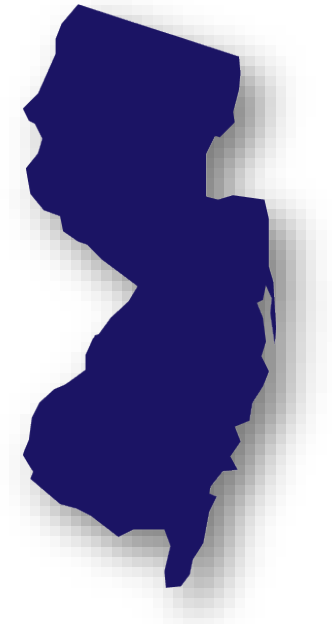


The When/Where/WHO of InCK

- Clinical launch is in January of 2022
- NJ and 7 other sites around the country will be simultaneously launching these projects which are funded to continue **through 2026**
 - NJ—Monmouth & Ocean counties
 - NY—3 zip codes in the Bronx (through NYS DOH/Montefiore)
 - CT—New Haven (through Clifford Beers Guidance Clinic)
 - NC—5 counties in Raleigh-Durham area (through Duke & UNC)
 - IL
 - *Lurie Children's Hospital*—2 Chicago zip codes
 - *Egyptian Regional Health Department*—5 rural counties
 - OH—Nationwide Children's Hospital—2 rural counties
 - OR—5 central OR counties (through OR Health Authority/OHSU)
- All kids 0-20 covered by NJ FamilyCare (Medicaid/CHIP)

Who is making InCK happen in NJ?

- **Co-lead agencies:** Hackensack Meridian Health (awardee), NJ Health Care Quality Institute, VNA of Central Jersey
- **Partnership Council:** Representatives of the CMMI defined Core Child Services
- **Coordinating Council:** Data and Information Sharing Governance
- **Other Key Partners:** New Jersey Chapter of the American Academy of Pediatrics, Central Jersey Family Health Consortium, SPAN Parent Advocacy Network



How does NJ InCK Work?

- After Screening and Diagnosis kids are put in *risk tiers* [Service Integrations Levels in CMMI parlance] 1—2—3 (1 being the lowest risk and 3 being the highest risk)
- NJ InCK sponsored resources are provided to medical providers and the community to connect Level 1 kids to needed resources

[More on this in September]



NJAAP's Role in the NJ InCK Project

- The NJAAP will provide *education for healthcare providers and practices* to understand and engage in the NJ InCK program through American Board of Pediatrics (ABP) approved Maintenance of Certification (MOC) Part 2 credit opportunities and more, such as:
 - Webinar series
 - Quality Improvement (QI) project
 - Project Extension for Community Healthcare Outcomes (ECHO)
- The Psychiatric Care Collaborative will be critical to *supporting behavioral health care*



NJ InCK: Key Features

- Development of *interoperable electronic platform* for real time sharing of individual child information between agencies and clinicians
- Development of *electronic data base* to track outcomes and metrics
- **Advanced Case Management teams:**
 - *Care Integration Managers* will serve as the liaison between primary care and the ACMTs
 - Teams will likely include social workers, community health workers, child life specialists, and family support specialists.
 - Teams will work in the community and also meet with the pediatric clinicians.
 - Extent of involvement based on level of Service Integration

Care Integration Managers

Air Traffic Controllers

- Reviews the claims history and the needs assessment
- Reviews the current care management the family is receiving
- Works to ensure that all current management is coordinated and that one agency becomes primary care coordinator with the family
- For those who stratify into levels 2 & 3 who have additional needs, they are assigned a care coordinator from the InCK Advanced Care Management Teams (ACMT) of community health workers and social workers.
- Ensures that the ACMT connects and meets regularly with the primary care medical home



Presented By:



Diana Autin

*Executive Director,
SPAN Parent Advocacy Network*



Deepa Srinivasavaradan

*Early Childhood Screening Initiatives,
SPAN Parent Advocacy Network*



Frances McCloskey

*Public Health Nursing Projects Coordinator
for Children & Family Health Institute,
Visiting Nurse Association Health Group*



SPAN:

A Resource for Families and Professionals in NJ & Nationally

Diana Autin, diana.autin@spanadvocacy.org
Deepa Srinivasavaradan, deepas@spanadvocacy.org

SPAN Parent Advocacy Network • 35 Halsey St, 4th Floor • Newark, NJ 07102
(973) 642-8100 • fx: (973) 642-8080 • span@spanadvocacy.org • spanadvocacy.org

What SPAN Provides

- Family & professional development
 - Individual Assistance
 - Information & resources
 - *Advocacy & support*
- ...to NJ parents of children ages 0-26, youth/young adults, and the professionals who serve them, &
- ...to family-led, family-serving organizations (Parent Centers & F2Fs) around the country





SPAN'S MISSION

To empower families
& inform & involve
professionals & others
interested in the
healthy development
& education of
children, to enable
them to become fully
participating &
contributing members
of our communities &
society.

SPAN'S FOCUS

Our foremost commitment is to children with the greatest need due to disability; poverty; discrimination based on race, gender, sexual orientation, language, or immigrant status; involvement in the child welfare or juvenile justice system; geographic location; or family or other special circumstances



SPAN'S ISSUE AREAS

- Family-led organizations
- Health & Mental Health
- Family Support
- Human Services
- Parent Leadership
- Self-Advocacy
- Children & families
- Early Intervention & Early Childhood
- Education
- Equity in services & outcomes



- Information
- Individual Assistance
- Training
- Support
- Leadership Development
- Public Policy Advocacy

SPAN ACTIVITIES



SPAN TA to Family Organizations

National

- Center for Parent Information & Resources –
www.parentcenterhub.org
 - National Parent TA Center funded by US ED OSEP
- RAISE – www.raisecenter.org
 - National Transition Parent TA Center funded by US ED OSERS
- Leadership in Family-Professional Partners (with Family Voices)
 - National F2F TA Center funded by US DHHS Maternal and Child Health Bureau

Regional

- NE-PACT (Navigating Excellence Parent Assistance & Collaboration Team)
 - Region A Parent TA Center funded by US ED OSEP
- REAL Transition Partners (collaboration with FCSN, INCLUDEnyc, Starbridge, & Parent Network of WNY)
 - Region A Transition TA Center funded by US ED OSERS

SPAN NJ Affiliates of National Organizations

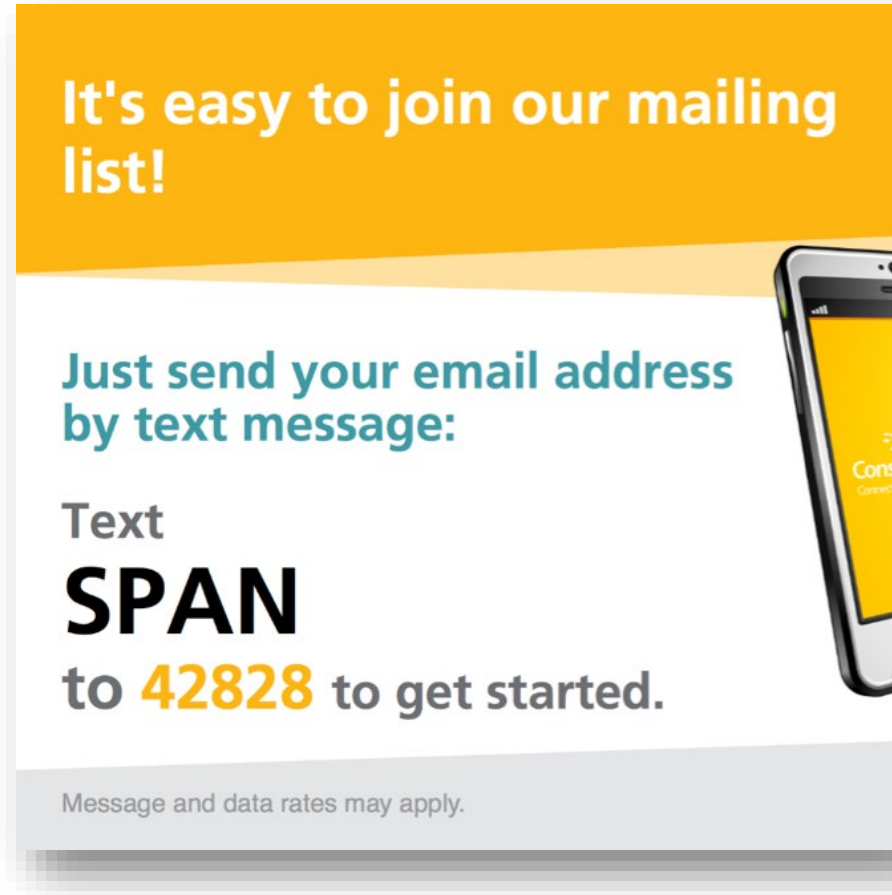
- Family to Family Health Information Center
- Family Voices Affiliate Organization
- National Federation of Families for Children's Mental Health State Organization
- Parent Training & Information Center
- Parent to Parent USA Affiliate



SPAN NJ-Based Projects

- Child Welfare & Juvenile Justice Rights of Youth with Special Needs
- Early Childhood Parent Lead
- EHDI Parent Leadership & Support
- Empowering Women for Healthy Communities
- Family WRAP
- Learn the Signs. Act Early.
- LEND Family Mentor
- Military Family Support 360
- NJ Inclusive Child Care
- Parents As Champions for Healthy Schools
- Sister to Sister Community Doula
- Special Education Volunteer Advocates
- Statewide TA & Resources Team

INFORMATION



- E-newsletters
- Websites (including COVID landing pages)
www.spanadvocacy.org
- www.parentcenterhub.org
- www.raisecenter.org
- YouTube channel
- Listservs
- Facebook page & groups
- Fact sheets
- Information packets
- Parent Guides

HEALTH INFORMATION TOOLS



- SPAN E-newsletter
- Website www.spanadvocacy.org
- Listservs
- Fact sheets & information packets on education, health/mental health, human services
- Child Developmental Health Passport
- Child Development Parent Engagement Cards
- Shared Plan of Care
- Health Advocacy Across the Lifespan
- Transition Guide
- Healthcare Financing Fact Sheet Series

NJ's Child Developmental Passports

The Child Developmental Passport includes:

- Definitions of Developmental Monitoring and Screening
- Well-Child Visit Tracker to track child's height, weight, immunizations, and head circumference
- Developmental Tracker to track child's developmental and/or autism screening information including results and referrals for follow-up
- Contact information for NJ Early Intervention, Project Child Find, SPAN Parent Advocacy Network, and Help Me Grow NJ's Central Phone Line



Resources to Help Build Resilience in Families

Parent Engagement Cards

- Based on New Jersey's Birth to Three Early Learning Standards
- Provide strategies for parents to use every day with their young children to help support their healthy physical, emotional, and mental development and wellbeing.

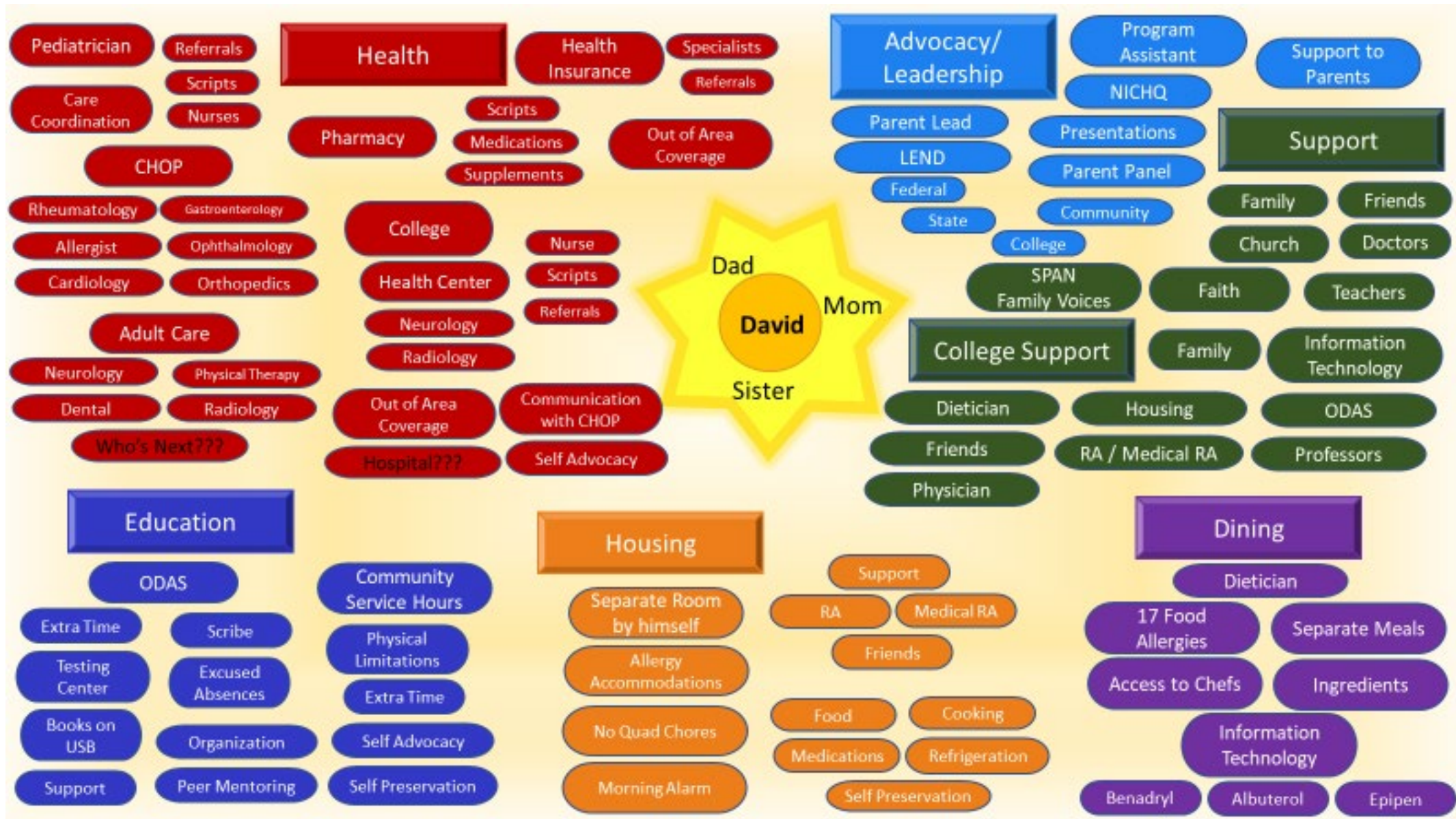


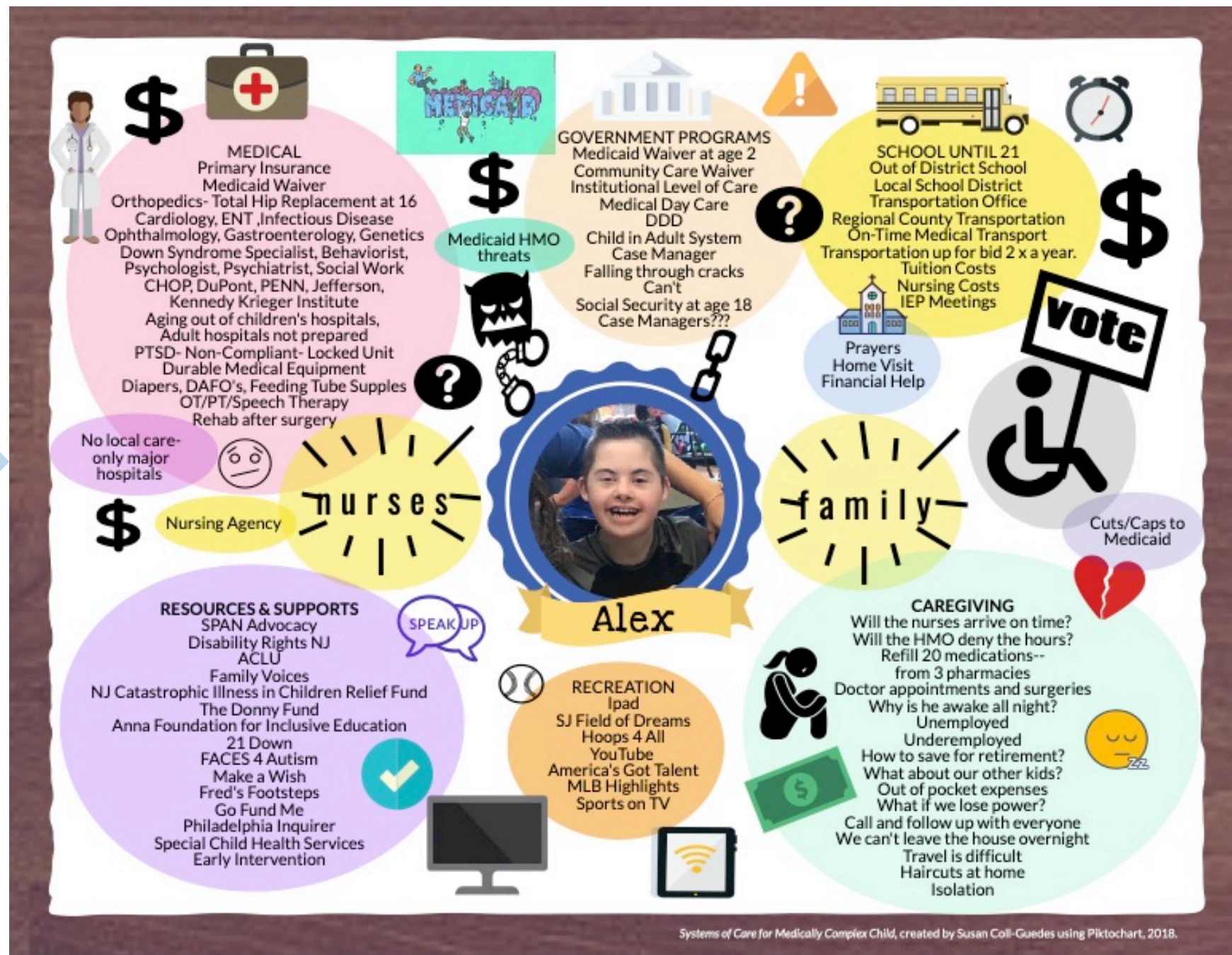
Shared Plan of Care

- A tool that is designed to help families communicate and share information about their child with members of their care team, including doctors, nurses, therapists, emergency responders, respite care providers, teachers, and child care providers.

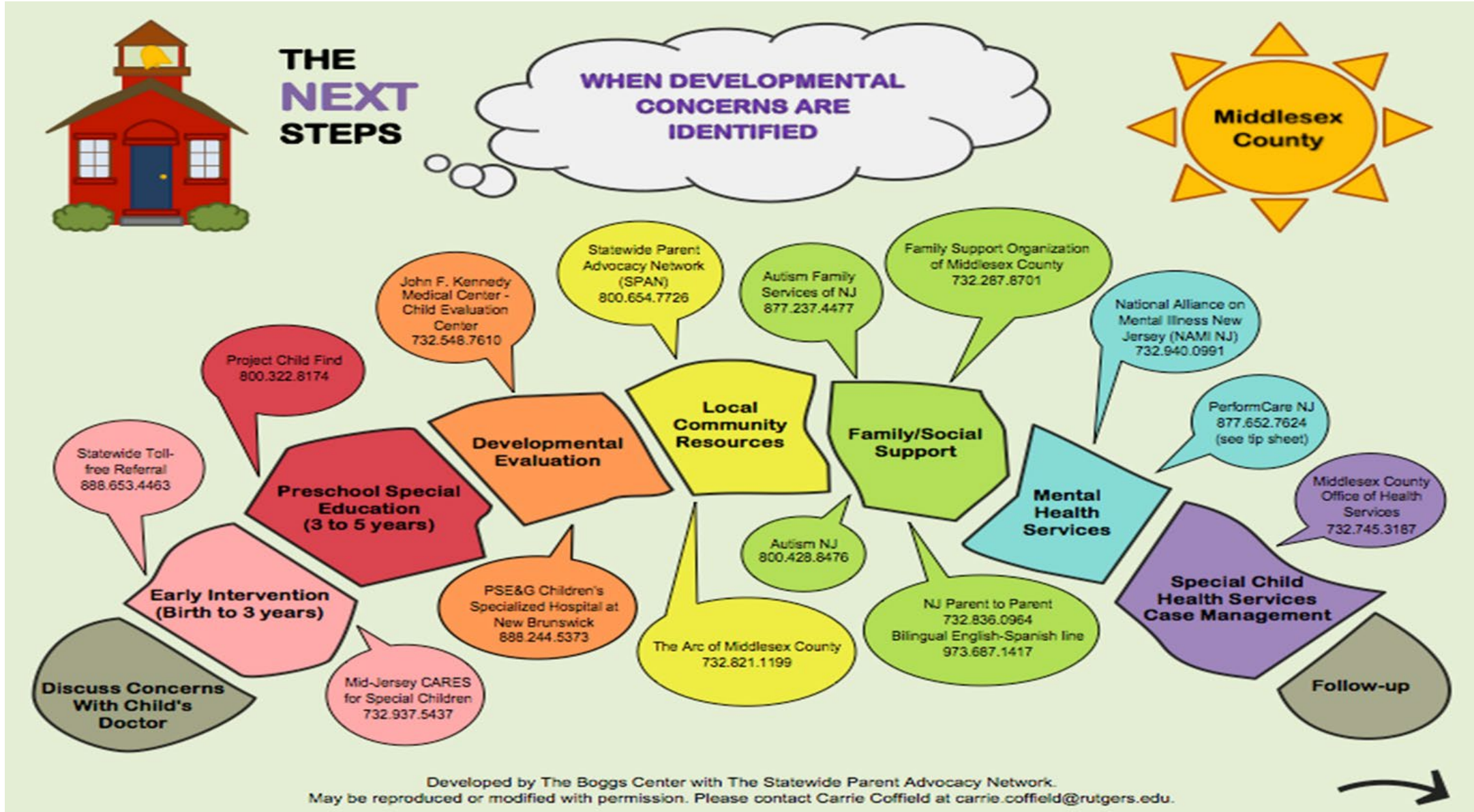


Care Map





Next Steps Flowchart by County (Sample)



Next Steps Statewide Flowchart

The Next Steps New Jersey

When Developmental Concerns are Identified

Discuss Concerns with Your Child's Doctor

If you or your child's primary caretaker has noticed that your child has not reached age-appropriate milestones, ask your child's doctor or nurse practitioner for a referral to a specialist. During your appointment, you should also bring up any vision, hearing, or dental concerns.

Contact Early Intervention (Birth to 3 years old)

The Early Intervention System is the primary point of entry for health and social services. The statewide toll-free number (888-653-4463) will connect you to someone who will guide you through the enrollment process.

Contact Preschool Special Education (3 to 5 years old)

Your local school district can give you information on transition planning, school placement and more. The New Jersey Department of Education, Office of Special Education Programs (609-292-4469) and Project Child Find (800-322-8174) provide information about special education programs throughout the state.

Schedule a Developmental Evaluation

An evaluation team will assess your child for developmental delays, make a diagnosis if needed, and recommend a treatment plan. To find out about Child Evaluation Centers near you, contact 609-777-7778 or visit: <http://www.state.nj.us/humanservices/ddc/home/ooanicec.html>

Connect with Local Community Resources

Community Resources include advocacy groups, parent workshops, and recreational programs. You may contact the Statewide Parent Advocacy Network (SPAN) at 800-654-7726 to learn more about what's available in your community.

Find Family/Social Support

Consider joining a support group or connecting with other parents to share experiences and resources. Some organizations that can help you get started include: NJ Parent to Parent (201-960-7159), Mom2Mom (877-914-6662), The Family Resource Network (800-376-2345), and Autism New Jersey (800-428-8476). You can also get in touch with your county's Family Support Organization (FSO). To find your county's FSO visit: www.state.nj.dcf/families/support/support

Mental Health and DD Services

PerformCare NJ (877-652-7624) connects children and their families to a variety of behavioral health and developmental disability services.

Contact Special Child Health Case Management

Your county's Special Child Health Services (SCHS) Case Management Unit will create an individual service plan to address your child's medical, educational, developmental, social, and economic needs. To find your county's Special Child Health Services Case Management Unit, contact 609-777-7778 or visit: <http://www.state.nj.us/health/fhs/sch/sccase.shtml>

Developed by The Boggs Center on Developmental Disabilities at Rutgers Robert Wood Johnson Medical School with the Statewide Parent Advocacy Network. May be reproduced or modified with permission. Please contact Carrie Coffield at carrie.coffield@rutgers.edu



Follow Up!

Keep in touch with your child's pediatrician, case manager, child care provider(s), and teacher(s).

TRAINING

- Individual workshops
- Lunchtime teleconferences
- Online webinars
- Facebook LIVE
- Regional training series
- Regional & statewide conferences



TRAINING

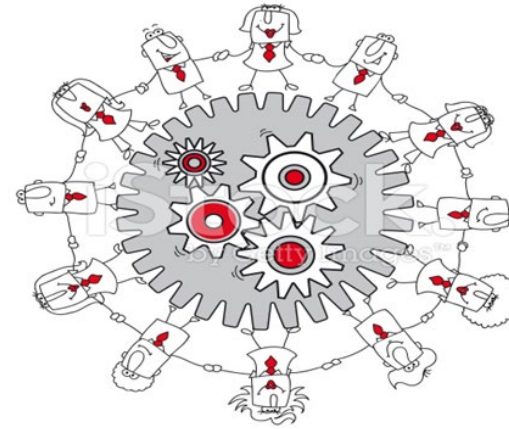


- Parent leadership development
 - Empowering Women for Healthy Communities (lead & FASD prevention)
 - LTS.AE Parent Ambassadors
 - Parents As Champions for School Health
 - SEVA (Special Education Volunteer Advocates) & SPAN Resource Parents
 - Special Ed Parent Advisory Groups
- Serving on Groups (parent leaders)
- Leading by Convening (conveners)

Family Involvement Vs. Family Engagement

Involvement is controlled

- Share information
- Request feedback
- Invite select group



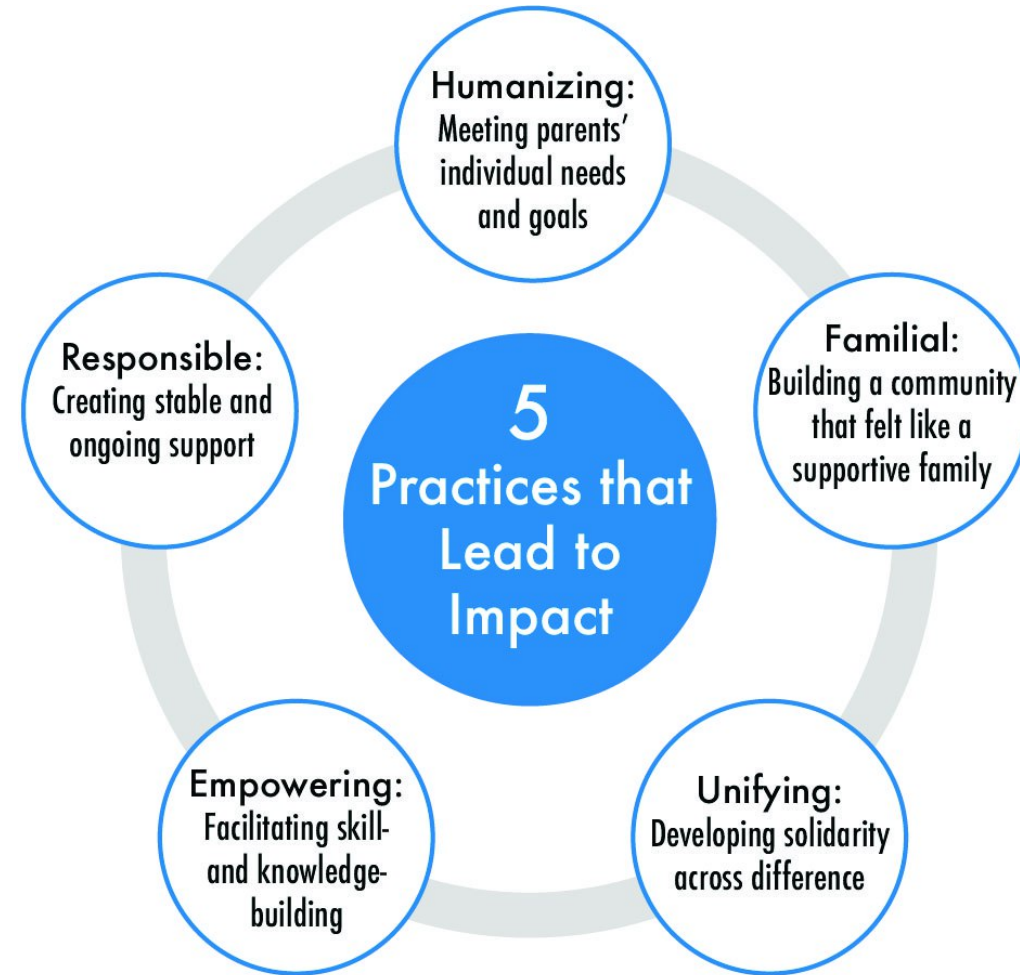
Involvement is open

- Involve at multiple levels
- Share leadership
- Work together

Eliminate Silos – Work with Parents at ALL Levels

Examples:

- Trained parent leaders – Act Early champions, SEVAs, Empowered Women/grandparents/youth, CCYCs and other advisory boards, etc.
- Home Visiting CoIN parent leadership work – challenges/lessons learned



PROFESSIONAL DEVELOPMENT

- Family-Professional Collaboration
- Education & Health Rights of Children with Special Needs in Child Welfare & Juvenile Justice
- Positive Behavior Supports
- Children with Dual Diagnosis
- Medical Home
- Parent-Led Screening Trainings
- Red Flags in Child Development



INDIVIDUAL ASSISTANCE

IN-PERSON/VIRTUAL

- Family Resource Specialists (FRS)
- SRP/SEVA
- Child care centers
- Healthcare Professionals

TELEPHONE

- Warm-line
 - 800-654-SPAN



SUPPORT

- NJ Statewide Parent to Parent Support parents
- Family Resource Specialists at SCHS-CMUs
- SPAN Resource Parent Volunteers
- SEVAs
- District Parent Support Groups
- Immigrant Parent Support Groups
- Fathers, grandparents



VIDEO & WEBINAR ARCHIVES

This archive contains recordings on a variety of topics of interest to families of children with disabilities and information about what SPAN does to help NJ families and children.

- Early Intervention Step-by-Step
- Inclusive Child Care
- Special Education FAQs
- Parent Involvement & Leadership
- Parents as Champions for Healthy Schools
- Transition to Adulthood
 - Talking to Your Child About their Disability
 - Assistive Technology and Transition
 - Developing Independence: Financial Literacy
 - Navigating Sexuality



The SPAN Family

- 70 FT & PT Staff
 - speak 11 languages
 - African American, Latino, South Asian, Caucasian
 - housed in all 21 counties
- 200 SRP Volunteers
- 350 Support Parents
- 600+ Parent Leaders
 - 200 immigrant parent leaders
 - 400 special education parent group leaders
 - 20 Essex Family Council members
- Community of Care Consortium
 - 200+ organizations and individuals

SPAN

A One Stop for Families!



Connect with SPAN...



Call us
1-800-654-SPAN (7726)



Visit our WEBSITE
www.SPANadvocacy.org



"LIKE" us on FACEBOOK
facebook.com/parentadvocacynetwork



Subscribe to our YOUTUBE channel
youtube.com/SPANadvocacy



Find us on PINTEREST
pinterest.com/SPANadvocacy



Follow us on TWITTER
[@SPANadvocacy](https://twitter.com/SPANadvocacy)



Subscribe to our E-NEWSLETTER at
www.spanadvocacy.org

Resources

- [Family Voices](#)
- [Center for Parent Information & Resources @ SPAN](#)
- [The Boggs Center](#)
- [NJ's Early Childhood Resources @ SPAN](#)
- [CDC's "Learn the Signs. Act Early."](#)
- [Division for Early Childhood Recommended Practices](#)
- [Got Transition](#)
- [RAISE Transition TA Center @ SPAN](#)



Parent Voice

Frances McCloskey

*Public Health Nursing Projects Coordinator for Healthy and Family Institute,
Visiting Nurse Association health Group*

Parental Experience from Birth to Adulthood



- MD to Neurologist 0-24 months
- Neurologist to Early Intervention 24 months to 3 years old
- Early Intervention to Community Resources opened doors to Audiologist, Occupational Therapy, Speech Therapy, Food Therapy, Behavioral Therapy 3- 5 years old
- Specialized Pre-school 3-5 years old – all year around – integrated & summer programs
- Integrated Public School with Aide with IEP and summer camps K-8th grade
- High School with IEP & BSA & Employed
- College with Disabilities Support Service
- Report to MD through the years

Questions?



NJAAP NJ InCK Team

609.842.0014

njinck@njaap.org

Join us for our sixth session!

Remodeling Healthcare for Children with NJ FamilyCare: *Care Integration Tools for Complex Health Conditions*

Thursday, September 9th from 12-1 PM

Presented By:

Steven Kairys, MD, MPH, FAAP

Chairman of Pediatrics,

Hackensack Meridian Health School of Medicine

Medical Director, NJAAP

Co-Principal Investigator, NJ InCK



Register Here!



Evaluation

If you are seeking CME/MOC part 2 or CNE credit for your participation, you must complete the webinar evaluation:

<https://forms.office.com/r/tG6LLc1P98>

